

Research and innovation in dairy and meat in Greece and REMTh in an international context

Karel Haegeman (EC)*



27 January 2015 – Komotini

European Commission

Joint Research Centre (JRC)

Institute for Prospective Technological Studies

Seville

karel-herman.haegeman@ec.europa.eu

* The views expressed are purely those of the authors and may not in any circumstances be regarded as stating an official position of the European Commission.

Three key concerns for this workshop



Concern 1

Idea before money

1. Business ideas need to come before the money

Two alternative options for setting regional priorities:

-Option 1: One can define (and adapt) regional priorities based on funding available

-Option 2: Or first develop ideas based on where the region thinks it can become globally competitive

May the first option bring more money to the region at first instance? Probably.

But will it also help the region forward in the long-term in becoming more competitive globally?

If a good idea is really good, funding is likely to be found



Concern 2

Plug into international networks

2. Need to plug into international networks

- Companies look across borders for sales and marketing
- But the same should go for research and innovation

Combine different strategies in doing so:

- Low hanging fruits: connect to existing international consortia for exchanging knowledge and expertise
- Second step is to become partner of selected international projects in research and innovation that best fit the regional specific priorities



Concern 3

**Combine regional strengths
with emerging trends**

WHAT HAPPENS AFTER TODAY

Project development labs

- From sector to theme: combine ideas from different focus groups (wine, dairy and meat, tourism, marble & zeolite,...)
- Further develop ideas, search for international partners, develop research aspects,...
- Explore different ways of funding: regional, national, European

Examples of dairy and meat projects co-financed by European funding sources

FP7 KBBE

AgriFoodResults

KBBE-2008-2-5-03 - Dissemination of research projects in the food sector

Virtual supermarket – Directory - Wiki



Prediction model for safe meat products

Indicators like pH, water activity, nitrate, time-temperature-ratio is the cost than strongly influence shelf life.

The danger: Pathogens in meat products can grow at low temperatures (3-4°C) without change of sensory properties. A safe shelf-life for meat products can be evaluated quicker and achieved cheaper using predictive microbial modeling.

New developed method to screen the products for safe shelf life limits the use of the more sophisticated methods. The method serves the monitoring of chilled ready-to-eat cooked meat products.

Status
Results are available for the industry, Prototype.

More Information
Project Summary (short)
Project Results (long)

Keywords
meat products, shelf life, predictive models, cold chain, MAP

Video in Key Findings
Simulation

Homepage
Campden UK www.campden.hu

Contact
Campden 801 Hungary, Dr. András Sebők, email: a.sebok@campden.hu, Phone: +3614731470

News

Events

Library

Tools

Members

Virtual supermarket

Directory

Wiki





FP7 KBBE

BACCHUS

12 leading Research & Technological centres and 15 Small and Medium Enterprises (SME)

Aims to develop tools and resources that will facilitate the generation of robust and exploitable scientific evidence that can be used to support claims of a **cause and effect relationship between consumption of bioactive peptides and polyphenols, and beneficial physiological effects** related to cardiovascular health in humans.

Eight work-packages each of which addresses key aspects of the EFSA health claim evaluation process





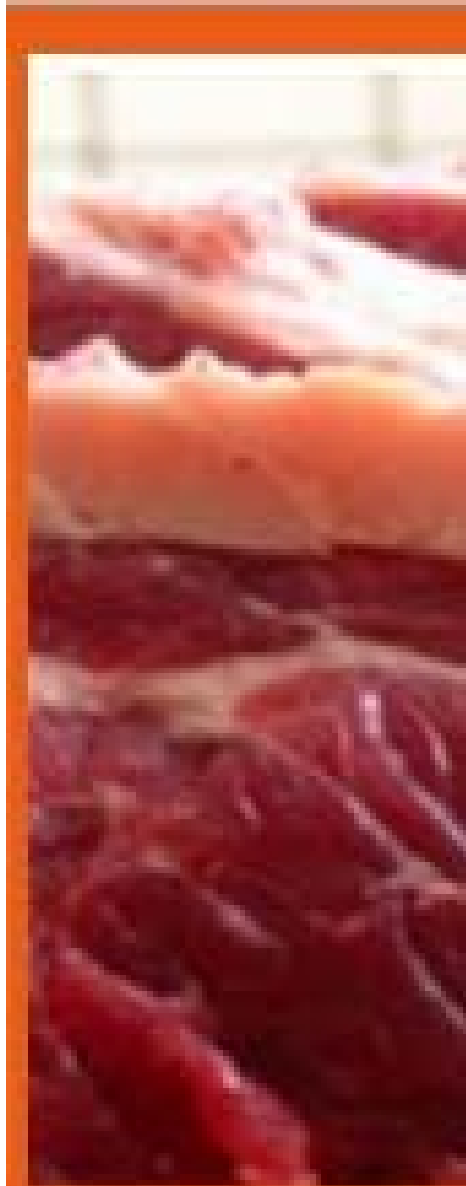
LEONARDO Project of Innovation Transfer

Open New Food *Open Innovation for New Food Product Development*

Project aiming to increase the awareness and competences of the managers of the Traditional Food Industries SMEs, about Collaborative Food Product Development in order to boost the “integrated value chain model” of food production, through the cooperation of transnational partners.

SEVT is a partner (www.sevt.gr): established Greek Technological Platform ‘Food for Life’ in co-operation with the Food Industrial Research and Technological Development Company (ETAT SA)ETAT S.A.

All material translated in Spanish, English, Turkish, Czech, Danish, French and Flemish



Enterprise Europe Network

Case: Distribution of Dairy Products

Czech company Gornicky Ltd. specializes in import of foreign meat and cheese delicatessen.

Based on an extensive list of manufacturers of the required products from network partners, potential suppliers were presented to the Czech company.



Matchmaking through The Enterprise Europe Network, with some 600 partner organisations in more than 50 countries, matches SMEs with the right partners using databases and matchmaking events.

<http://een.ec.europa.eu/success-stories/wine-analysers>



Erasmus Mundus MSc Food of Life



About EM Food of Life

Scholarships

[What is Food of Life?](#)

Who can apply?

Study Programme

Universities

Degree

How to Apply

Contact

FAQ

[EM Food of Life](#) > [About EM Food of Life](#) > [What is Food of Life?](#)



What is Food of Life?

Food of Life is a two-year Masters Course within the field of animal-derived foods. EMFOL is a part of the [Erasmus Mundus programme](#) initiated by the European Commission and you can apply for [scholarships](#) to cover you tuition fees and living costs.

EMFOL builds on the expertise of four European universities:

- University of Copenhagen, UC
- Swedish University of Agricultural Sciences, SLU
- Universitat Autònoma de Barcelona, UAB
- University of Helsinki, UH

You will have to study at two of these institutions if you get admitted to the programme. The two countries must be different from the country in which you obtained your last university degree.



Image © Steve Morgan / WWF-UK



Healthy people, healthy planet.

LiveWell for LIFE

The project looks at how low-carbon, healthy diets can help us achieve a reduction in greenhouse gas emissions from the EU food supply chain.

The project is funded through the EU's LIFE Programme for the Environment and will be implemented over three years (2011-2014).

LIFE programme 2014-2020: <http://ec.europa.eu/environment/life/>



SHARING KNOWLEDGE - CONNECTING PEOPLE - TACKLING CHALLENGES

European Innovation Platform: Agriculture and innovation

European meeting point. Staying up to date. Networking.
Funding: The Fast Track to Innovation (FTI) pilot under Horizon 2020



One example: Amazing grazing:
www.amazinggrazing.eu

- **Graze to cash** - How to increase pasture yield with direct grazing?
- **Grass dinner** - How to increase the quantity that cows eat?
- **Plants to graze** - Which are the best plants to graze?
- **Relaxing grazing** - How to reduce working hours of farmers in direct grazing systems?
- **Weatherproof** - How to reduce the effect of weather conditions in direct grazing?

Joint Programming Initiatives



Joint Programming Initiative

A HEALTHY DIET FOR A HEALTHY LIFE



FACCEJPI

Agriculture Food Security and Climate Change



www.faccejpi.com



Thank you